



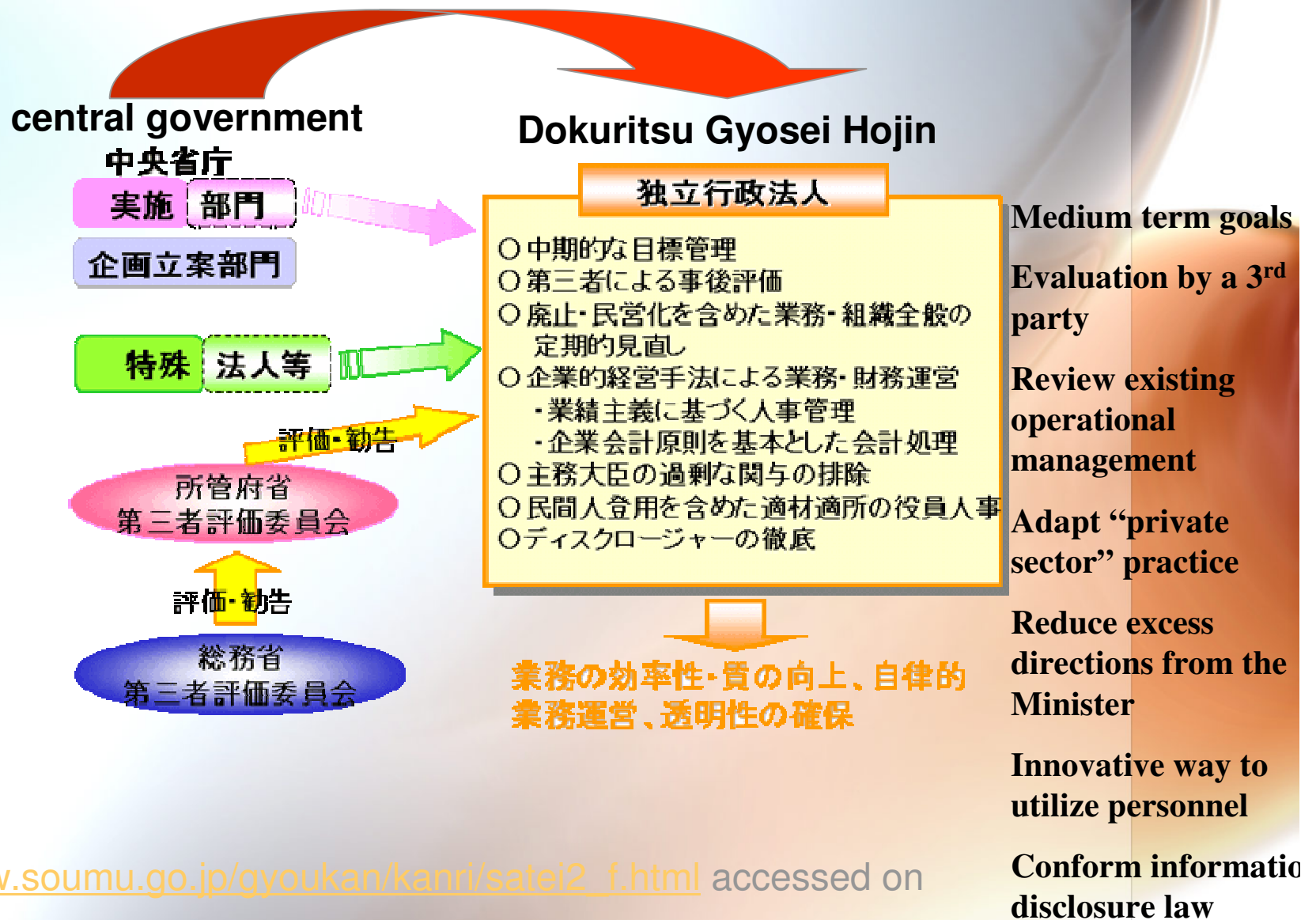
# **Hojinka: The Evolving Information Environment in Japan**

Tokiko Y. Bazzell  
University of Hawaii at Manoa  
[tokiko@hawaii.edu](mailto:tokiko@hawaii.edu)

# Outline

- **Hojinka: what is it?**
- **How will the change affect us?**
- **How can we maintain support for Japanese studies activities?**
- **Closing**

# Summary of the system



# What is hojinka?

The operational or program functions



independent administrative institution  
(独立行政法人)

more autonomy on planning, budgeting,  
program execution



Evaluation by others

# Evaluation

“Under the Law on the General Rules of Incorporated Administrative Agencies, the performance of incorporated administrative agencies are evaluated in terms of achievement towards the goals set by the competent minister indicating improvement in efficiency, improvement of services in quality to be provided to the public, and improving in financial situation.”

<http://www.soumu.go.jp/english/kansatu/index.html> accessed on 3/30/06

# **examples**

- **2001 – Independent Administrative Institution National Museum of Art (5 national museums)**
- **October 2003 - Japan Foundation**
- **April 2004 – national universities**
- **April 2004 – NII became a member of the Inter-University Research Institute Corporation**
- **2004 – National Institute for the Humanities (6 institutions)....**



## **How can we maintain support?**

- **Provide meaningful feedback as service/grant/program beneficiaries.**
- **Express comments via mass media, newsletters and on web sites, etc.**
- **Educate all stakeholders such as librarians/information professionals, faculty, students and general public.**
- **Involve Japanese consulates/embassies and other local Japanese government agencies.**

# North American Coordinating Council On Japanese Library Resources

**NCC  
Information  
Literacy  
Resources**

北米日本研究資料調整協議会



<b>NCC Information Literacy Resources Homepage</b>
<a href="#">About the Project</a>
<a href="#">Workshops/Conferences</a>
<a href="#">Teaching Support Materials</a>
<a href="#">Guides/Tutorials /Seminars</a>
<a href="#">Information Literacy Groups</a>
<a href="#">Bibliographies/Links</a>
<a href="#">Contact Us</a>
<a href="#">NCC Information Literacy Resources Sitemap</a>

## Welcome to NCC Information Literacy Resources

- [About the Project](#)
- [Workshops/Conferences](#)
- [Teaching Support Materials](#)
- [Guides/Tutorials/Seminars](#)
- [Information Literacy Groups](#)
- [Bibliographies/Links](#)

**SEARCH**







Contents

- 1 Feature Stories
- 2 Recent Events
- 3 Faculty News
- 4 Student News
- 5 CJS Seminar
- 6 From the Library
- 7 The Tea Center

MAN'YOSHŪ



Kanamasa Suzuki's 白鹿 (Stag)

J-CURRENT reports on the achievements and activities of UHDM Japanese Studies faculty and students as well as Japan-related events, research, scholarships and overseas programs. Submission deadline for the next issue is April 14, 2006. Please send to:

J-CURRENT Editor  
Center for Japanese Studies  
1890 East-West Road, Moore 216  
University of Hawaii 'i at Mānoa  
Honolulu, HI 96822

E-mail: [cjs@hawaii.edu](mailto:cjs@hawaii.edu)  
Tel: (808) 956-2667  
Fax: (808) 956-2666  
Web: [www.hawaii.edu/cjs](http://www.hawaii.edu/cjs)

Copyright © 2006 Center for Japanese Studies.  
All rights reserved.  
An Equal Opportunity / Affirmative Action  
Institution

This spring, the Center for Japanese Studies, along with the University of Hawaii 'i at Mānoa Library, the Consulate-General of Japan Honolulu, and supported by the Japanese Cultural Center of Hawaii, hosted an opening reception for the artwork inspired by the *Man'yōshū* (The Collection of 10,000 L of Japan's earliest works of poetry). The artwork, on display at the Library Gallery from March 20 to March 24, was created by the artists, Yasumasa and Seir. They have reinterpreted 11 poems, creating a vast collection of modern Japanese-style art. In the gallery showing of their art and pottery, the Suzukis were an opening reception on March 20. The opening ceremony featured by Dr. Alexander Vovin (Korean origins of some of the *Man'yōshū*), and Dr. Ro

# From the Library

## NEW DATABASES AVAILABLE AT HAMILTON LIBRARY

Two new databases are now available from the Library. One is the *Shōwa no Yomiuri Shinbun*. Finding relevant newspaper articles is not an easy task because many Japanese newspapers lack sufficient indexes. This database provides an alternate means for users to find newspaper articles on the *Yomiuri Shinbun* from 1925 to 1960. Just a simple keyword such as "Hawaii" in Japanese showed over 1,700 articles between 1946 and 1960. The database provides a full image of the actual newspaper that contains your keyword. To learn more about this database, please come to the PC #3 on the Asia Collection Reading Room on the 4th Floor, or use the CJS computer at the Scholar's Workstation next to the Science & Technology Reference Desk.



Dr. Lenny Carlile and Masashi Shimono researching at the Microfilm Reading Room.

The other online database is called "The Japan Knowledge." It can be accessed from anywhere. This multi-purpose database provides dictionaries, encyclopedias (*Nihon dai hyakka zensho*), *Jōhō chishiki midai*, *Gendai yōgo no kiso chishiki*, *Kodansha Encyclopedia of Japan*, and more. The "One Search" feature allows you to search among all the dictionaries and encyclopedias. There are also full texts of the weekly magazine *Ekonomusato* and many volumes of *Tōyō Bunko*, interactive Edo, Meiji Tokyo maps, and more. To access, click on the Library's Electronic Resources hot link:

<http://micro189.lib3.hawaii.edu/ezproxy/details.php?dbId=49904>

Last year, the Japan Foundation awarded 99 reels of the microfilm "*Nihon no kaishashi*" to the University of Hawaii 'i at Mānoa Library. All the reels safely arrived from Japan and are now available for your research (microfilm S11519, S11520, S11523-S11525). (Tokiko Bazzell)

### FILMS ADDED TO MĀNOA LIBRARY

Through a grant from the Japan Studies Endowment, the Wong Audio-Visual Library at the University of Hawaii 'i has added over twenty-five new Japanese films to the library's holdings. We have provided a link on our website for you to explore some of these titles, which can be found at [www.hawaii.edu/cjs/library.html](http://www.hawaii.edu/cjs/library.html) or directly at [www.hawaii.edu/cjs/film](http://www.hawaii.edu/cjs/film). These films, organized by subject on the site, include documentaries, yakuza films, psychological thrillers, gay/lesbian themes, anime and murder mysteries. These films are a welcome addition to the already tremendous holdings at the Wong Library. We encourage you to take time to look over these films and others already in the collection.

access, click on the Library's Electronic Resources hot link:

Japan and are now available for your research (microfilm S11519, S11520, S11523-S11525). (Tokiko Bazzell)



onoa researching at the Room.

[edu/ezproxy/details](http://www.hawaii.edu/ezproxy/details).

warded 99 reels of the ' to the University of eels safely arrived from your research (microfilm S11519, S11520, S11523-S11525). (Tokiko Bazzell)

## **How can we maintain support?**

- **Provide meaningful feedback as service/grant/program beneficiaries.**
- **Express comments via mass media, newsletters and on web sites, etc.**
- **Educate all stakeholders such as librarians/information professionals, faculty, students and general public.**
- **Involve Japanese consulates/embassies and other local Japanese government agencies.**

The image is a vertical split composition. The left half shows a silhouette of Mount Fuji against a bright orange and yellow sunset sky. The right half shows Mount Fuji with a snow-capped peak, set against a purple and blue twilight sky with a bright sun or moon rising directly behind the mountain. The text "Japan's information environment is evolving!" is overlaid in white, bold, sans-serif font across the center of both halves.

**Japan's information environment is evolving!**





*Thank you*